



# ALLOY

## PRECISION TECHNOLOGIES

Parent of Alloy Bellows & Precision Welding and Star Precision Technologies

Alloy Precision Technologies  
6989 Lindsay Dr., South Building  
Mentor, Ohio 44060

(440) 266-7700  
sales@alloyprecisiontech.com

## Artificial Gas Lift & Electric Submersible Pump (ESP) Systems

### Artificial Gas Lift Systems



#### High-performance bellows, seals & complete assemblies for oil & gas drilling

- 1.0 inch & 1.5 inch gas lift bellows
- Monel & Inconel material options
- Extreme and high pressure applications
- High life cycle performance & fatigue resistance
- Compliant with industry standards API 19G2



### Next-Generation NXL-1.5 Gas Lift Bellows

#### 1.5 inch artificial gas lift bellows

- Formed from Inconel 625
- 75% more tensile strength than Monel
- Increased temperature, pressure & corrosion resistance
- Allows for deeper wells with highly corrosive environments
- Able to weld stem guide & housing welding



### Electric Submersible Pump (ESP) Systems



#### Welded assemblies made for the challenging ESP environments

- Proven reliability & life cycle
- Extreme operating temperature capability
- Corrosion resistant materials & weldments
- Assembly qualification & test capabilities



### Instruments & Controls



#### Sensors, valves, instrumentation and actuators

- Tight tolerance & precision components
- Predictable & repeatable spring rates & measurements
- Higher life cycle performance
- Expertise in thin-wall welding & welded assemblies
- Assembly qualifications & test capabilities





# ALLOY

## PRECISION TECHNOLOGIES

Parent of Alloy Bellows & Precision Welding and Star Precision Technologies

Alloy Precision Technologies  
6989 Lindsay Dr., South Building  
Mentor, Ohio 44060

(440) 266-7700  
sales@alloyprecisiontech.com

## Quality Certifications & Commitment

Quality has always been a priority at Alloy Precision Technologies. Our customers know that providing quality products and services “most of the time” just isn't good enough. They deserve and expect consistent and reliable products every time.

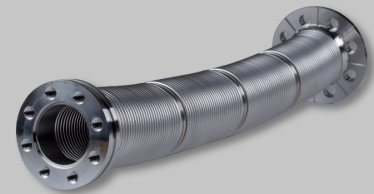
- CMM and automated optical scanning inspection methods
- Certified quality: AS9100 Rev D & ISO 9001
- Qualification capabilities & tools: APQP, FAI & PPAP
- NDT level 1, 2 & 3 inspectors on staff
- Various forms of product quality testing including:
  - Fluorescent penetrant inspections (FPI)
  - Helium leak testing (up to  $1 \times 10^9$  cc / second)
  - Pressure testing
  - X-ray testing
  - Cycle fatigue testing
  - Spring rate testing



## Engineering & Product Development

Our in-house team of engineering & design experts are capable of designing product solutions from the most basic to most complex applications. We continually invest in the tools for our world-class product development and manufacturing, including:

- SolidWorks 3D modeling
- CNC Programming in GibbsCAM
- Analysis using design tools
- R & D lab testing
- Project management principles



## Customer Focus

Our comprehensive “one-stop shop” approach for product concepts through manufacturing provides greater flexibility, more control over quality and lead times, and an overall easier process for you.

- We help with design and assemblies to meet your unique specifications
- We manufacture and assemble your components for turnkey solutions
- We have stocking programs to get you the products you need, when you need them.